



July 21, 2008

To The Valued Residents and Businesses of Jeffersontown:

Re: Adopt a Trail Segment – City Beautification Program



On November 10th, 2007, the City of Jeffersontown, along with John Schnatter and Papa John's, hosted the inaugural Bike/Walk Fitness First Event in Jeffersontown. At this event, we dedicated the Phase I of the "Gaslight Recreational & Workplace Bicycle & Pedestrian Trail". The event was a huge success!

The completion of Phase I serves as a catalyst for future routes connecting our neighborhoods, workplace, recreational parks and downtown. Jeffersontown takes great pride in the "quality of life" amenities available throughout the city and I encourage you to incorporate biking and walking into your corporate health initiatives. Many of your employees may be already enjoying this recreational trail.

I would like to extend a unique opportunity to Jeffersontown area businesses to be apart of our bike/walk trails by adopting a segment of the trail. Your business would be given the opportunity to design and landscape a portion of the trail and be recognized through the placement of a sign. The adopted sites will be profiled on the City's web site along with the Bike/Walk Jeffersontown Map. The identified adoption sites are Waterworks, The Sycamore, The Point, Shady Grove, and Rails to Trails, Overlook Point, Skyview Flower Power, Feet First Trail and Rock Ledge Vista. See the attached maps.

This bike/walk adoption program could be a great way to build community spirit while promoting your business to the citizens of Jeffersontown. If you are interested in adopting a trail site or would like to learn more about how you can get involved please contact me or Matt Meunier (mmeunier@jeffersontownky.com) at 267-8333.

Sincerely,

Clay S. Foreman
Mayor

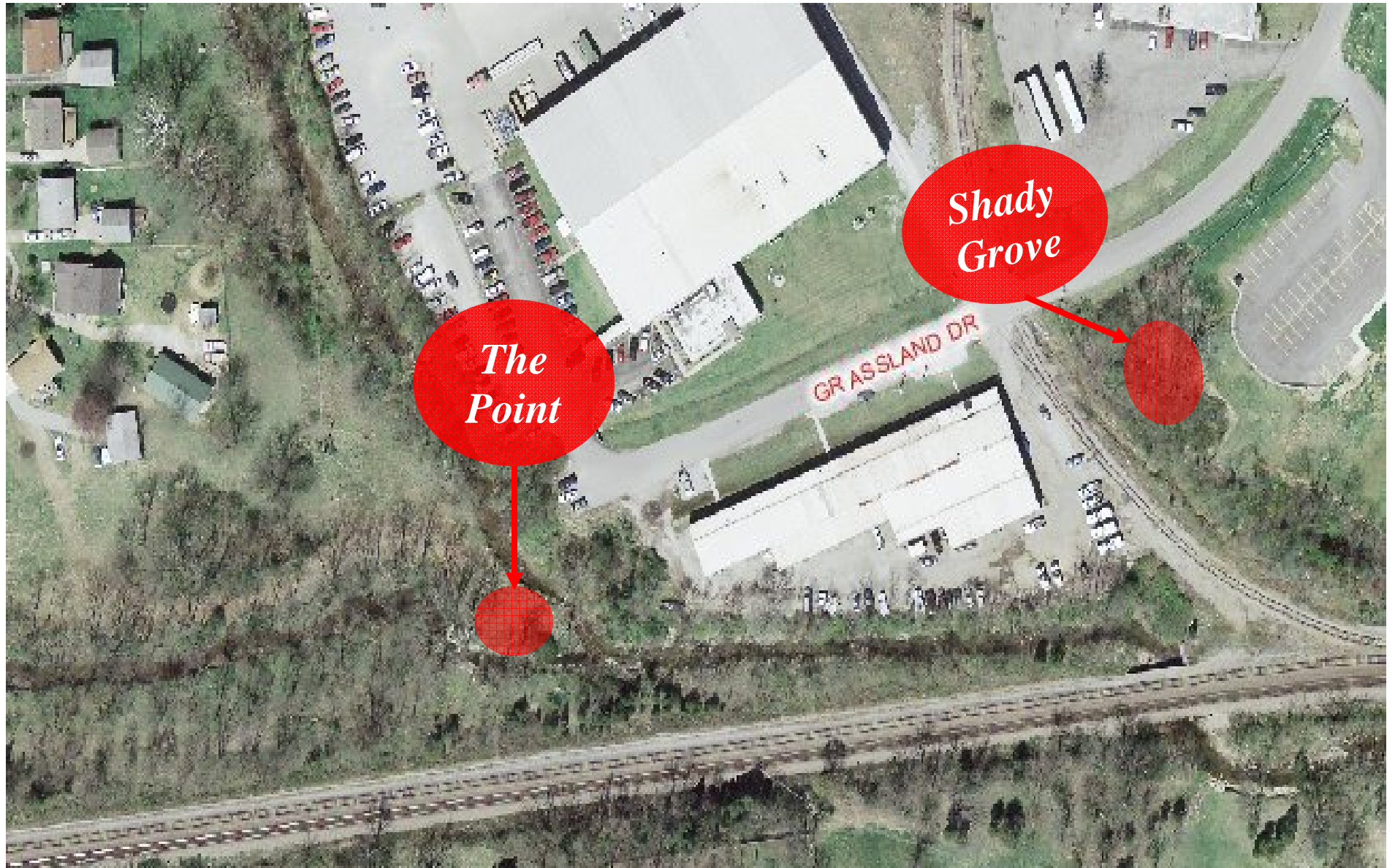
Mission

"To enhance the quality of life within Jeffersontown by providing alternative means to the automobile and encourage physical fitness, family exercise and to create a link between where people live and work. Connecting the neighborhoods to the downtown, city parks, commercial corridors and the workplace will enhance accessibility throughout the



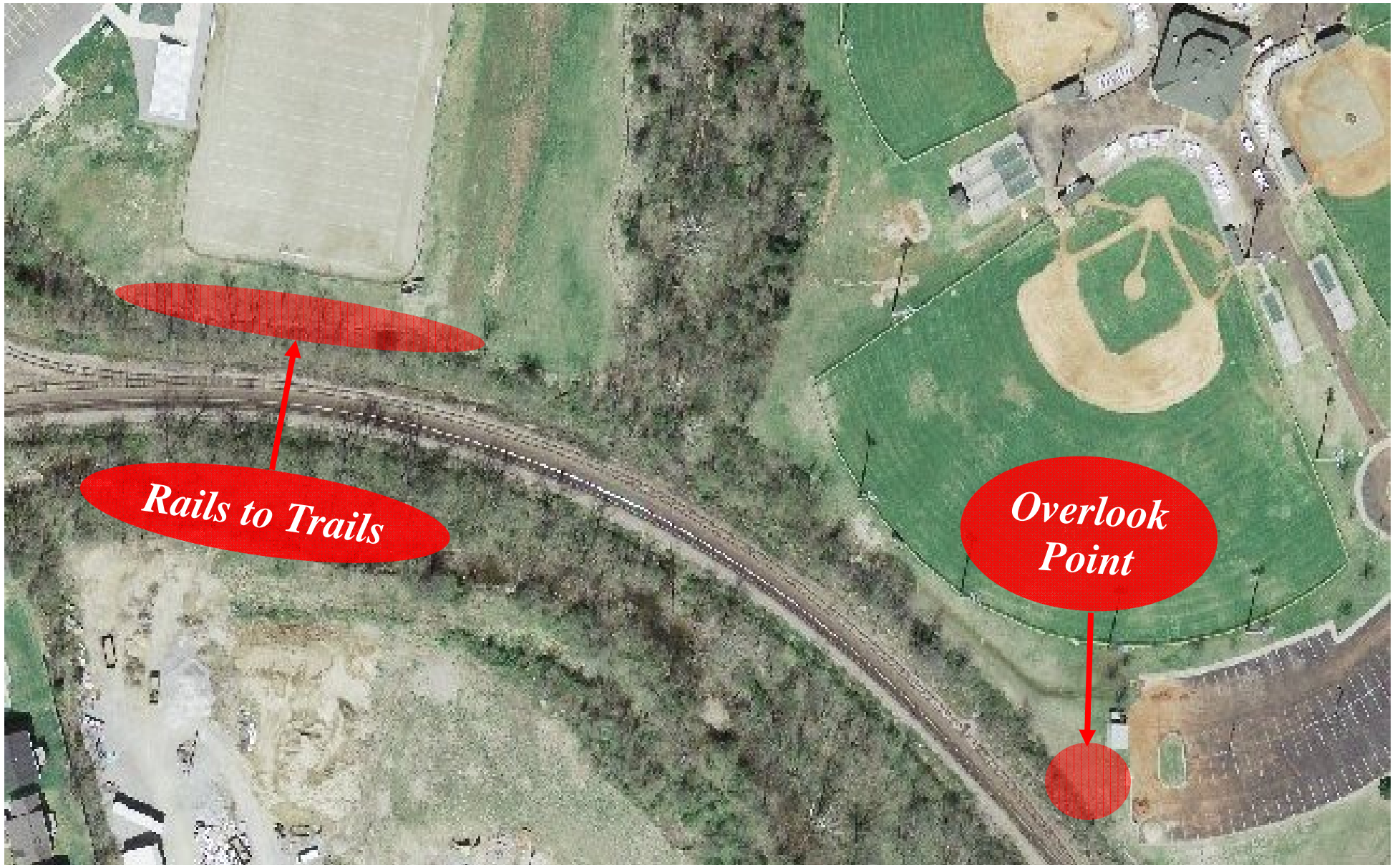
Waterworks

The Sycamore



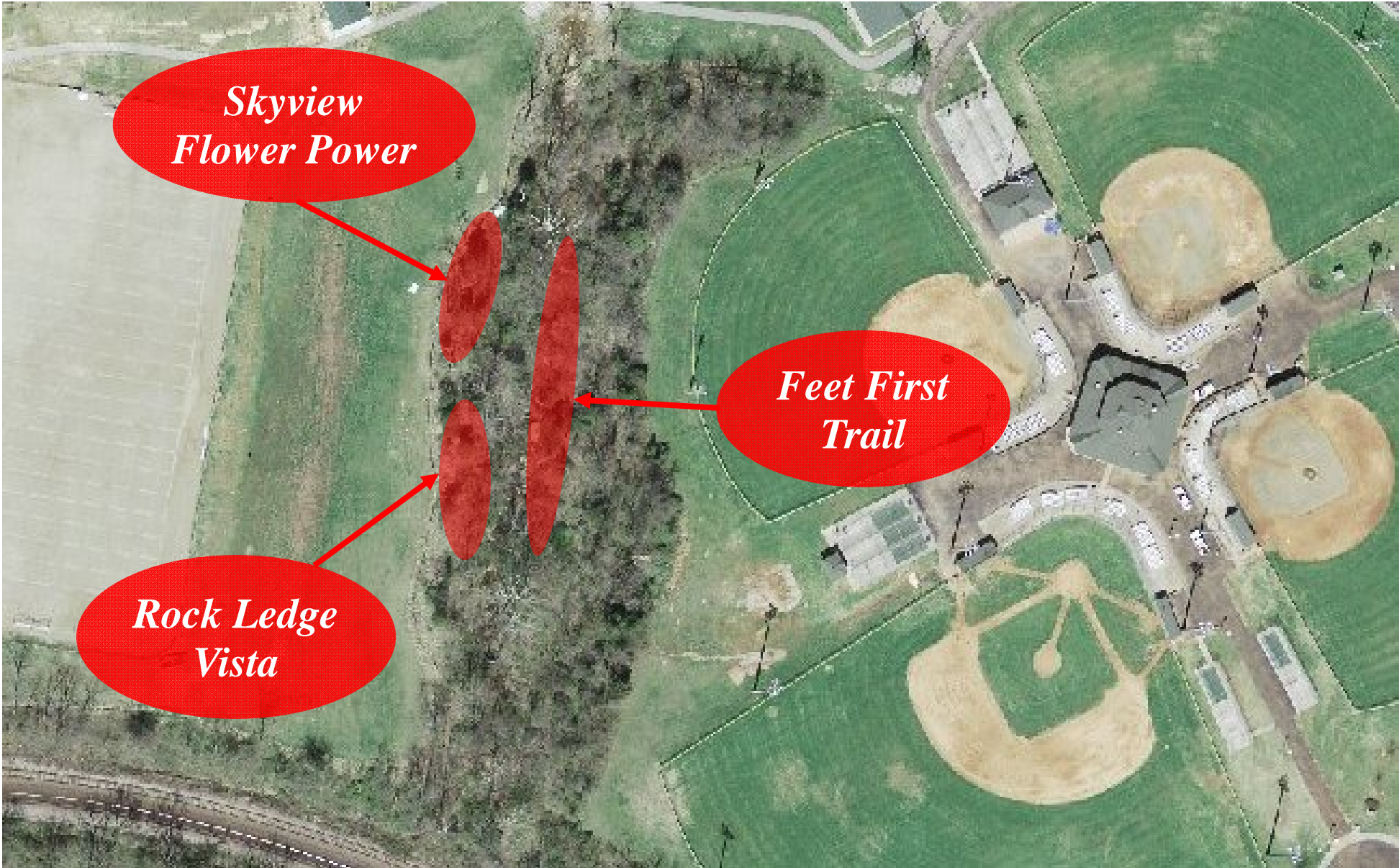
*The
Point*

*Shady
Grove*



Rails to Trails

Overlook Point



*Skyview
Flower Power*

*Feet First
Trail*

*Rock Ledge
Vista*